

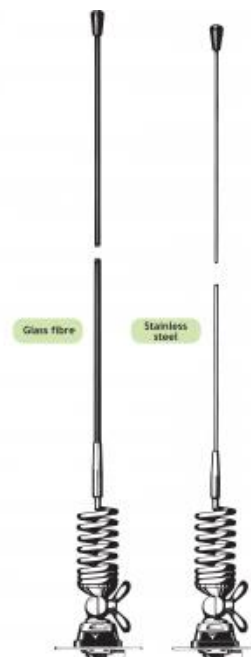
## MH 3-Z

½ λ Mobile Antenna with Shock Spring for the 160 MHz Band

- Sturdy, 3 dB gain, ½ λ antenna in professional quality.
- Available with glass fiber or stainless steel whip.

### DESCRIPTION

- Stainless steel Z-mount with ball-joint and wing screw whip-fastening system.
- Available with bright or black-chromed metal parts (mount and whip):
  - MH 3-Z...: Bright version
  - MH 3-BZ...: Black version
- Simple mounting exclusively with access from the outside. Models with roof thickness from 2 mm to 7.5 mm mounting from the inside.
- Choice between two connection principles:
  - Z-mount: FME-connection (supplied without cable).
  - ZP4-mount: Permanently attached 4 m cable terminated with FME-connector.



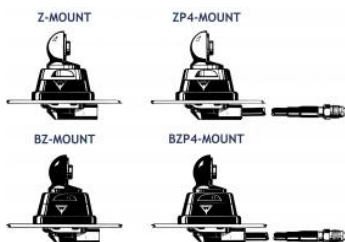
### ORDERING DESIGNATIONS

TYPE WHIP Stainless steel	PRODUCT NO.	TYPE WHIP Glass fiber	PRODUCT NO.	MOUNT VERSION
MH 3-ZR	130000751	MH 3-Z	130000743	Z-mount with FME-system BRIGHT
MH 3-BZR	130000758	MH 3-BZ	130000747	BZ-mount with FME-system BLACK
MH 3-ZP4R	130000753	MH 3-ZP4	130000745	ZP4-mount with 4 m cable + FME-connector BRIGHT
MH 3-BZP4R	130000752	MH 3-BZP4	130000746	BZP4-mount with 4 m cable + FME-connector BLACK

Hat screw option:



For antenna delivered with hat screw instead of wing screw add a K to the antenna designation.



### SPECIFICATIONS

ELECTRICAL	
MODEL	MH 3-Z
ANTENNA TYPE	½ λ mobile whip antenna
FREQUENCY	Tunable by cutting within: 144...175 MHz
IMPEDANCE	Nom. 50 Ω
POLARIZATION	Vertical
GAIN	3 dB (acc. to EIA RS-329-1)
BANDWIDTH	4 - 5 MHz @ SWR ≤ 2.0
SWR	≤ 1.3 @ f.res.
MAX. POWER	150 W
MECHANICAL	
MATERIALS	<b>Whip:</b> Conical glass fiber or stainless steel Chromed brass <b>Spring:</b> Stainless steel <b>Mount:</b> Chromed brass Weather- and shockproof plastics Stainless steel
RECOMMENDED INSTALLATION TORQUE	7.5 ± 1 Nm
COLOUR	Bright or black, see above
HEIGHT	Approx. 1.38 m
WEIGHT	Z-version: Approx. 360 g ZP4-version: Approx. 510 g
MOUNTING	ø21 mm dia. hole (For roof thickness 2 mm up to 7.5 mm mounting hole should be ø22 mm dia.)
ROOF THICKNESS	Max. 2.0 mm (Models up to 7.5 mm on request)

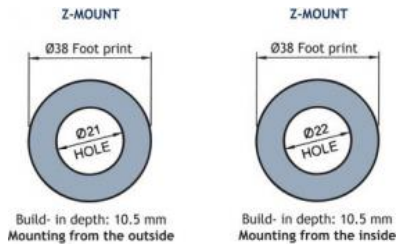
### INSTALLATION

This antenna is provided with type Z-mount. The whip is fastened to the mount by means of our standard ball-joint and wing screw system. The adjustable ball-joint ensures that the whip can always be mounted in a vertical position independent of the angle of the installation spot.

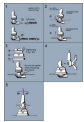
The Z-mount is particularly well suited for mounting on car-roofs because of its ability to be installed exclusively with access from the outside. The Z-Mount for roof thickness from 2 mm to 7.5 mm must be mounted from the inside.

However, the antenna can be installed anywhere on the car, as the Z-mount is equally well suited for mounting on e.g. trunk or wing.

### 1. INSTALLATION DIMENSIONS



### 2. INSTALLATION STEPS



Do not use sealer on rubber gasket or other places.

### 3. TUNING

The antenna should always be tuned using an SWR-meter. The cutting diagrams below serve as a guide for this procedure.

